

09-04-07  
 CIE: FT 11-10-10  
 Canton, Illinois  
 09.04.07  
 171TS8206  
 0180012041

**MATERIALS**

PROF.	1/4" THK A36 MOD.
SHELL	1/4" THK A36 MOD.
BOTTOM	3/8" THK A36 MOD.
FLANGES	A105
REPAIRS	N/A
NOZZLE NECKS (PIPE)	A106-B
NOZZLE NECKS (PLATE)	A36 MOD.
WELL FITTINGS	A204-WPB
VESSEL SUPPORT	A36
STRUCTURAL	A36
BOLTS	A307 ZINC PLATED
NUTS	A307 ZINC PLATED
GASKETS	1/8" WYPALEN

**DESIGN CONDITIONS**

DESIGN PRESSURE	2.5 PSIG / -5 W.C.
AT DESIGN TEMP. (°F)	275
OPERATING PRESSURE	27M
AT OPERATING TEMP. (°F)	100
CORROSION ALLOWANCE	1/8"
LABEL	API 650, TENTH EB, ADD 4
STRESS RELIEVE	NONE
RADIOGRAPH	NONE
JOINT EFF.	70
HYDRO TEST	N/A
AIR TEST	3-5 PSIG
CUSTOMER INSPECTION	YES
WTR COPIES	1 KTM, 1 CUSTOMER
NAMEPLATE FACSIMILE	YES
SEISMIC & WIND DESIGN	PER API-650

**WEIGHTS & CAPACITIES**

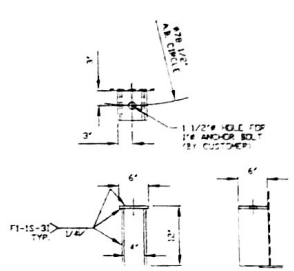
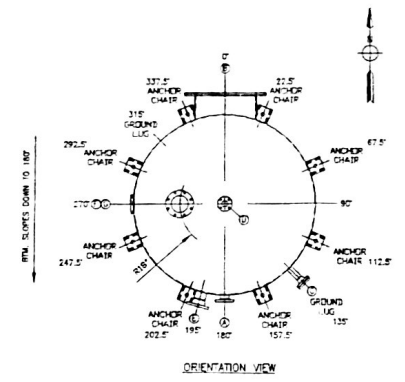
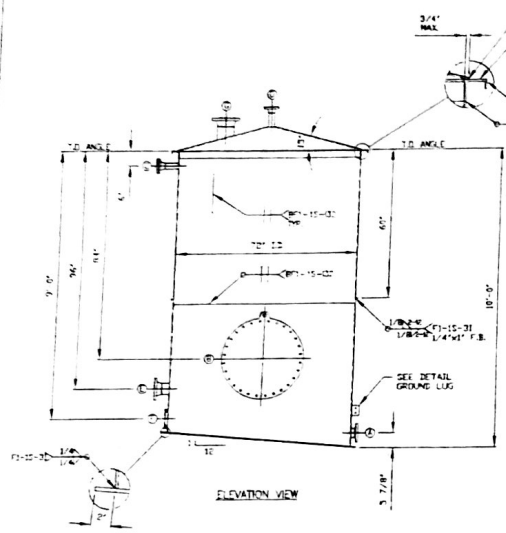
EST. CAPACITY, GALS.	
PER FT. STRAIGHT SIDE	211.5
TOTAL CDT TO TOP ANGLE	2,052
SP. GR. OF CONTENTS	9.42
EST. WT. OF CONTENTS (LBS)	16,122
EST. WT. OF VESSEL (LBS)	4,300
TOTAL EST. WT. (LBS)	20,122

**FITTING SCHEDULE**

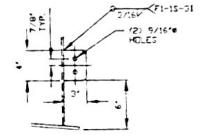
NO.	SIZE	TYPE/MATERIAL	COMMENT
A	1 1/2"	316/1508/RF/SD/SCH 80	DISCHARGE
B	1 1/2"	24" API	SIDE MANWAY
C	1 1/2"	24" 1508/RF/WN/SCH 80	SPARE W/ BLIND
D	1 1/2"	24" 1508/RF/WN/SCH 80	VENT
E	1 1/2"	4" 1508/RF/WN/SCH 80	INLET
F	1 1/2"	3" 1508/RF STUD PAD	LEVEL TRANS
G	1 1/2"	6" 1508/RF/WN/SCH 40	CONSERVATION VENT

**NOTES**

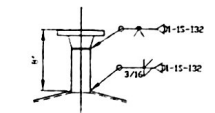
1. BOLT HOLES TO STRAGGLE LINE PARALLEL TO 0°/180° AND 90°/270° CENTERLINES.
2. FABRICATOR SHALL PROVIDE GASKETS, BOLTS, AND HEX NUTS FOR ALL MATING PARTS INCLUDING BLIND FLANGES WHERE NOTED.
3. V INDICATES MACHINE FINISHED SURFACE.
4. INSULATION SUPPORTS ARE REQUIRED.
5. FABRICATOR SHALL PROVIDE PROTECTIVE SHIELDS FOR ALL FLANGES AND OPENINGS.
6. SHOP TOLERANCES DIMENSIONS & 1/8" NOZZLES & 1/2" DEGREE.
7. SANDBLAST - EXTERNAL; SSPC-SP6.
8. LINING: NONE.
9. PAINT: ONE COAT INTERZING 22 AT 2-3 MILS DFT.
10. RADIUS WELDS & INTERNAL EDGES 1/8" MINIMUM.



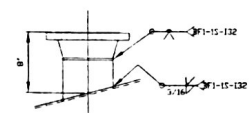
DETAIL ANCHOR CHAIR  
 (2) REQ'D  
 MATL: 1/2" THK A36  
 SCALE: 1 1/2" = 12"



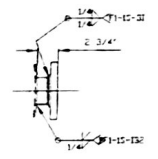
DETAIL GROUND LUG  
 TWO REQ'D  
 1/4" THK A36  
 RADIUS CORNERS  
 SCALE: 1 1/2" = 12"



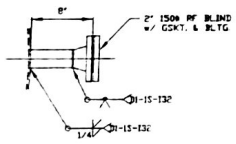
DETAIL NOZ. 'D'  
 CUT 2" SCH 80 PIPE 5 3/4" LG.  
 SCALE: 1 1/2" = 12"



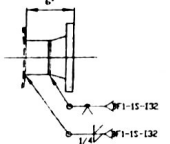
DETAIL NOZ. 'C'  
 CUT 6\"/>



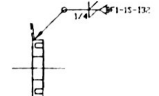
DETAIL NOZ. 'A'  
 CUT 2" SCH 80 PIPE 5 3/4" LG.  
 SCALE: 1 1/2" = 12"



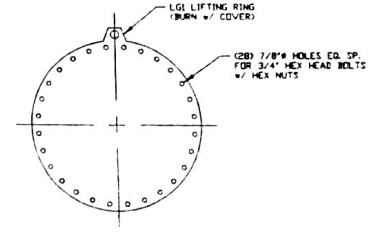
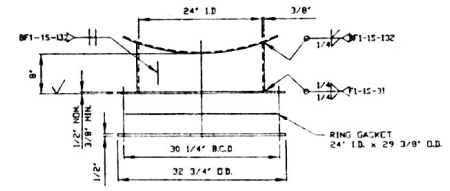
DETAIL NOZ. 'C'  
 CUT 2" SCH 80 PIPE 5 3/4" LG.  
 SCALE: 1 1/2" = 12"



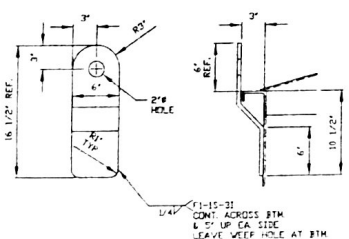
DETAIL NOZ. 'E'  
 CUT 4" SCH 80 PIPE 3 3/8" LG.  
 SCALE: 1 1/2" = 12"



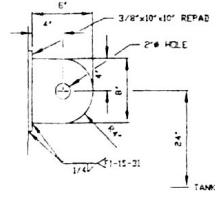
DETAIL NOZ. 'F'  
 SCALE: 1 1/2" = 12"



DETAIL NOZ. 'B'  
 ROLL 3/8" THK PL TO 24" I.D.  
 SCALE: 1 1/2" = 12"



DETAIL LIFT LUG  
 TWO REQUIRED  
 TRAFFIC W/ TO LOCATE  
 3/8" THK A36  
 SCALE: 1 1/2" = 12"



DETAIL TAILING LUG  
 ONE REQUIRED  
 TRAFFIC W/ TO LOCATE  
 3/8" THK A36 (LUG & REPAID)  
 SCALE: 1 1/2" = 12"

API STANDARD 650	
APPROX. YEAR COMPLETED	2007
EDITION	TENTH
NOMINAL DIAMETER	10'-0"
MAXIMUM CAPACITY	1000 GAL
DESIGN SPECIFIC GRAVITY	1.2
DESIGN PRESSURE	2.5 PSIG
MANUFACTURER'S SERIAL NO.	2552-15
FABRICATED BY	KENNEDY TANK & MFG. CO. INDIANAPOLIS, IN
DESIGNED BY	
SHELL CORROSION	MATERIAL
1/2"	1/4" A36 MOD.

DETAIL NAMEPLATE

CERTIFIED AS BUILT DRAWING  
 KENNEDY TANK & MFG. CO., INC.  
 INDIANAPOLIS, INDIANA  
 BY: [Signature] DATE: 12/20/07

CERTIFIED AS BUILT CHECK  
 CHK. BY: [Signature]  
 DATE: 7-6-07  
 LUSGI, INC.



KENNEDY TANK & MANUFACTURING CO., INC. 833 EAST HUNTER AVENUE INDIANAPOLIS, INDIANA 46221	
REVISIONS	DESCRIPTION
NO.	DATE BY
1	1/27/07
2	3/24/07
3	7/26/07
4	11/20/07
5	12/20/07
6	12/20/07
7	12/20/07
8	12/20/07
9	12/20/07
10	12/20/07
11	12/20/07
12	12/20/07
13	12/20/07
14	12/20/07
15	12/20/07
16	12/20/07
17	12/20/07
18	12/20/07
19	12/20/07
20	12/20/07
21	12/20/07
22	12/20/07
23	12/20/07
24	12/20/07
25	12/20/07
26	12/20/07
27	12/20/07
28	12/20/07
29	12/20/07
30	12/20/07
31	12/20/07
32	12/20/07
33	12/20/07
34	12/20/07
35	12/20/07
36	12/20/07
37	12/20/07
38	12/20/07
39	12/20/07
40	12/20/07
41	12/20/07
42	12/20/07
43	12/20/07
44	12/20/07
45	12/20/07
46	12/20/07
47	12/20/07
48	12/20/07
49	12/20/07
50	12/20/07